

Whaley Bridge Transhipment Warehouse

Sketch Design Options



Canal &
River Trust

Contents

Page

About Us

2

Document Brief

3

Sketch Option 1 - Activity Centre

5

Sketch Option 2 - Art House

10

Sketch Option 3 - Local Market

16

About Us

In an increasingly fast-paced and crowded world, the Canal & River Trust's historic waterways provide a local haven for people and nature.

In an increasingly fast-paced and crowded world, the Canal & River Trust's historic canals and rivers provide a local haven for people and nature. Just a few steps away from our everyday lives, waterways give us a much-needed space where we can escape. Next to our waterways can relax and reconnect with ourselves, our environment and the people who matter to us. Our waterway network is a national treasure and the Canal & River Trust is here to ensure that it is protected forever.

We believe that the true potential of our canals and rivers and their long-term survival will only be secured if we fully engage with our visitors, neighbours and business partners. By harnessing their goodwill, energy and expertise, we can widen the enjoyment of our waterways today while protecting them for future generations.



■ Brief

Executive Summary

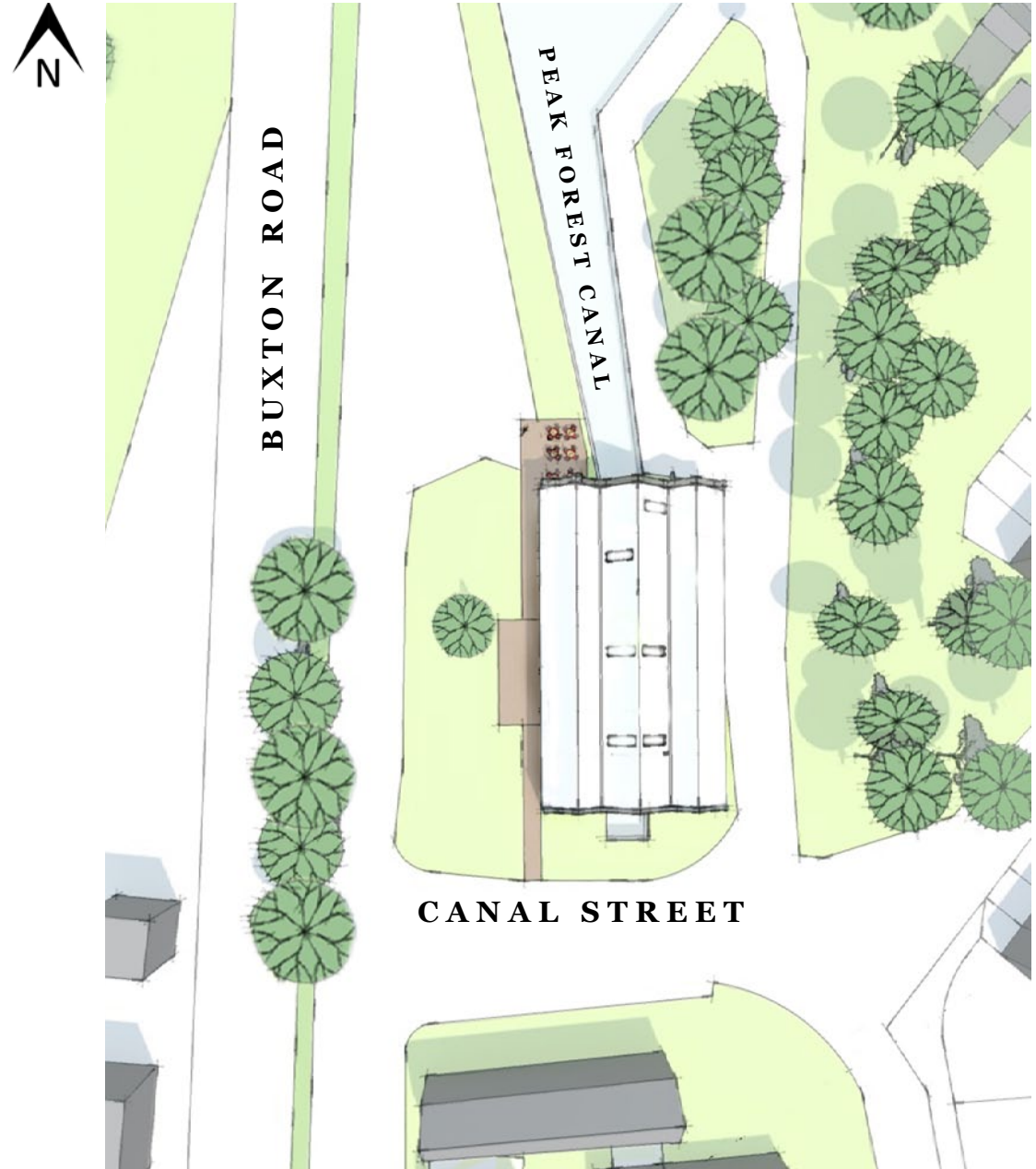
This document illustrates potential uses for the Whaley Bridge Transhipment Warehouse, located in the High Peak of Derbyshire.

The Transhipment Warehouse is a grade II* listed building with a rich historic background dating back to 1801. The building is currently not in use and is in need of investment and maintenance.

Sketch design priorities lie in retaining the building's existing character while breathing community activity into its atmospheric spaces.

Scope of Design Work

To explore potential uses for the Whaley Bridge Transhipment Warehouse through sketch design options. Layouts and designs are based upon estimations. All design work contained within this document is at an early stage, it should not be utilised for costing, survey or construction purposes.



Sketch Site Plan

● Key Design Parameters

- Sketch design options are to have a light touch, removable design solutions are to be utilised where possible.
- Existing character to be retained, designs to keep open warehouse like feel.
- Use to be community orientated.
- Waterway must remain accessible for Canal & River Trust operational staff.
- Use to generate funding for future maintenance



Photograph of existing interior space



Photograph of existing building from Canal Street



Photograph of existing building from the canal's perspective

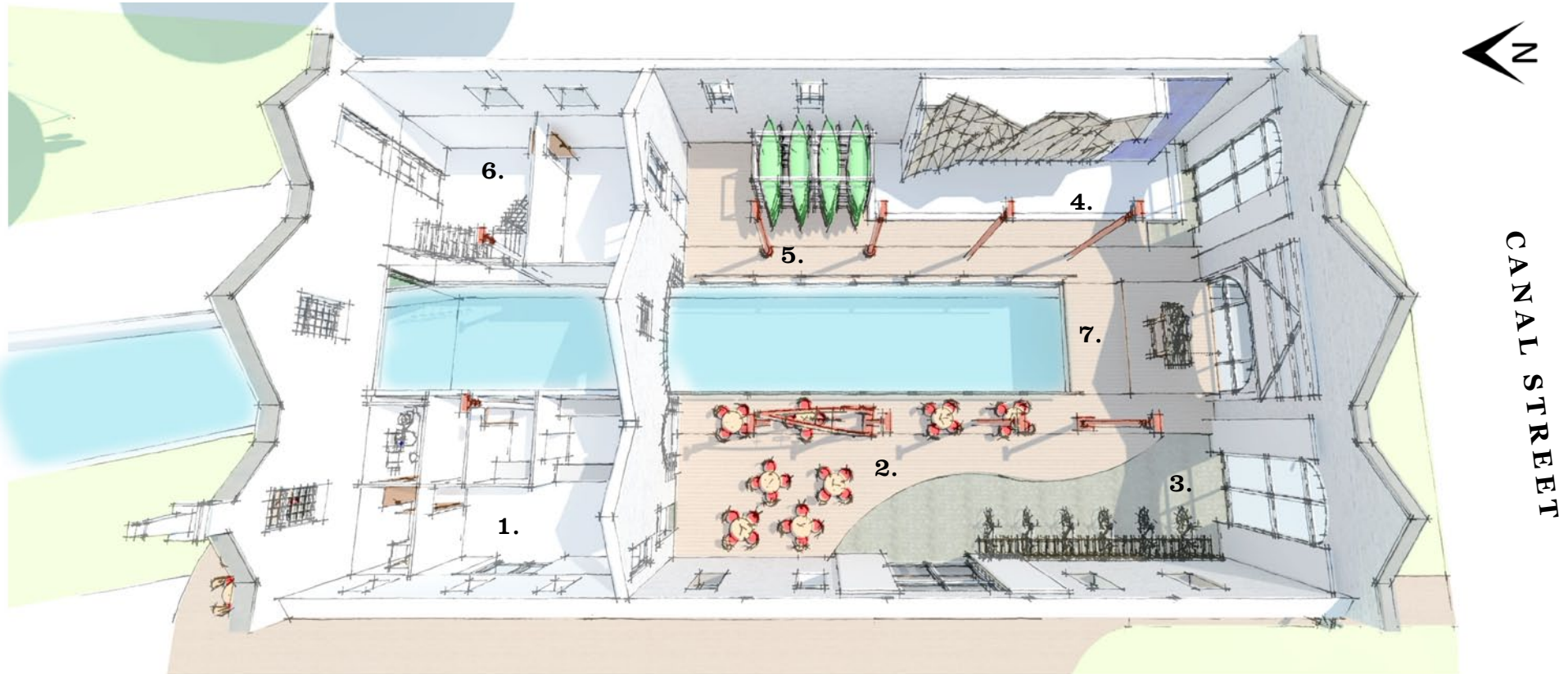
● Sketch Option 1; Activity Centre

Option 1 visualises an activity centre, making use of the internal navigation feature for paddle sports. Rock climbing walls could add to the mix of outdoor activity, a bike rental business and cafe would transform the transhipment warehouse into an outdoor activity one stop shop for schools, community groups and day visitors.



Option 1; Sketch perspective A

Option 1; Ground Floor Plan



Key

1. = Reception, cafe & ambulant W.C

2. = Cafe seating

3. = Bike rental space

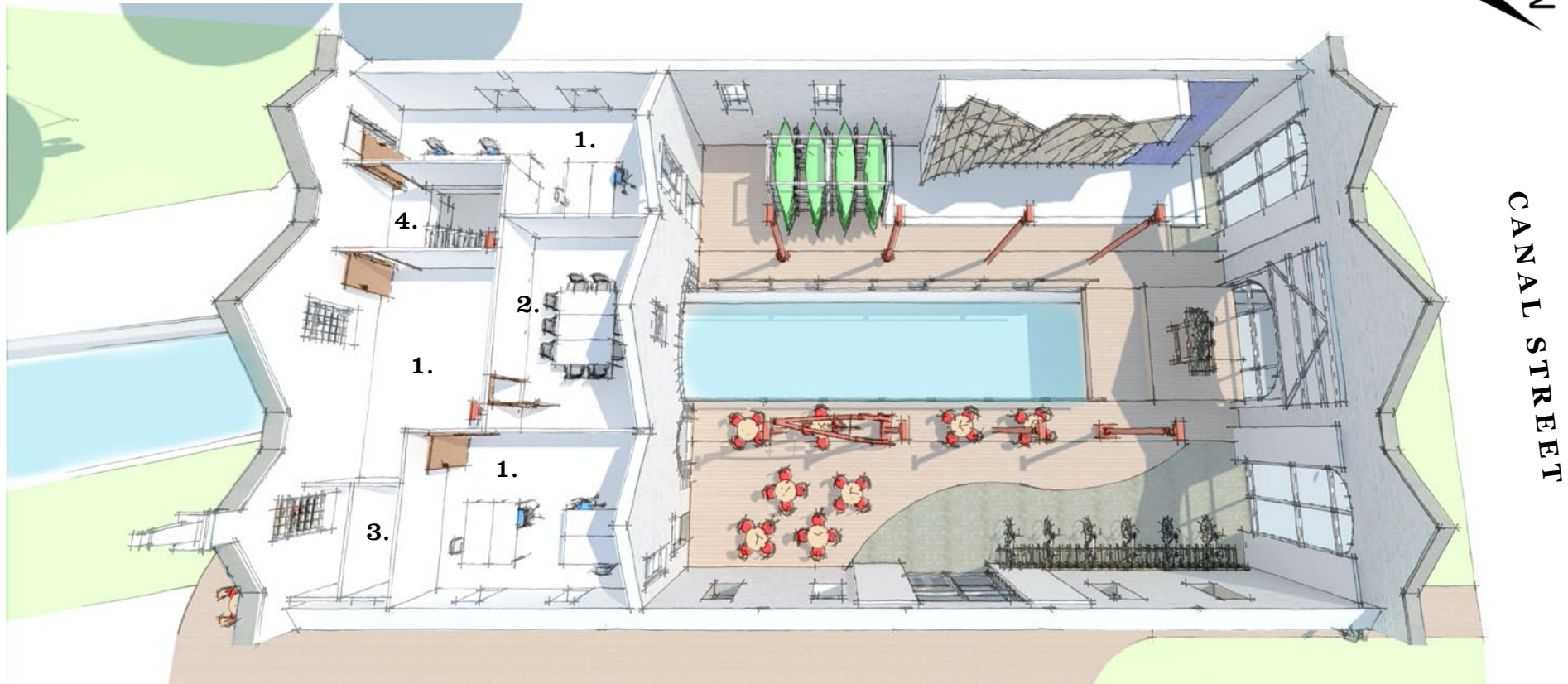
4. = Rockclimbing walls

5. = Paddle sport store

6. = Storage areas & stairwell

7. = Pontoon/bike workshop

Option 1; First Floor Plan



Key

- 1. = Office space
- 2. = Meeting room
- 3. = Toilets
- 4. = Stairwell



Option 1; Sketch perspective B

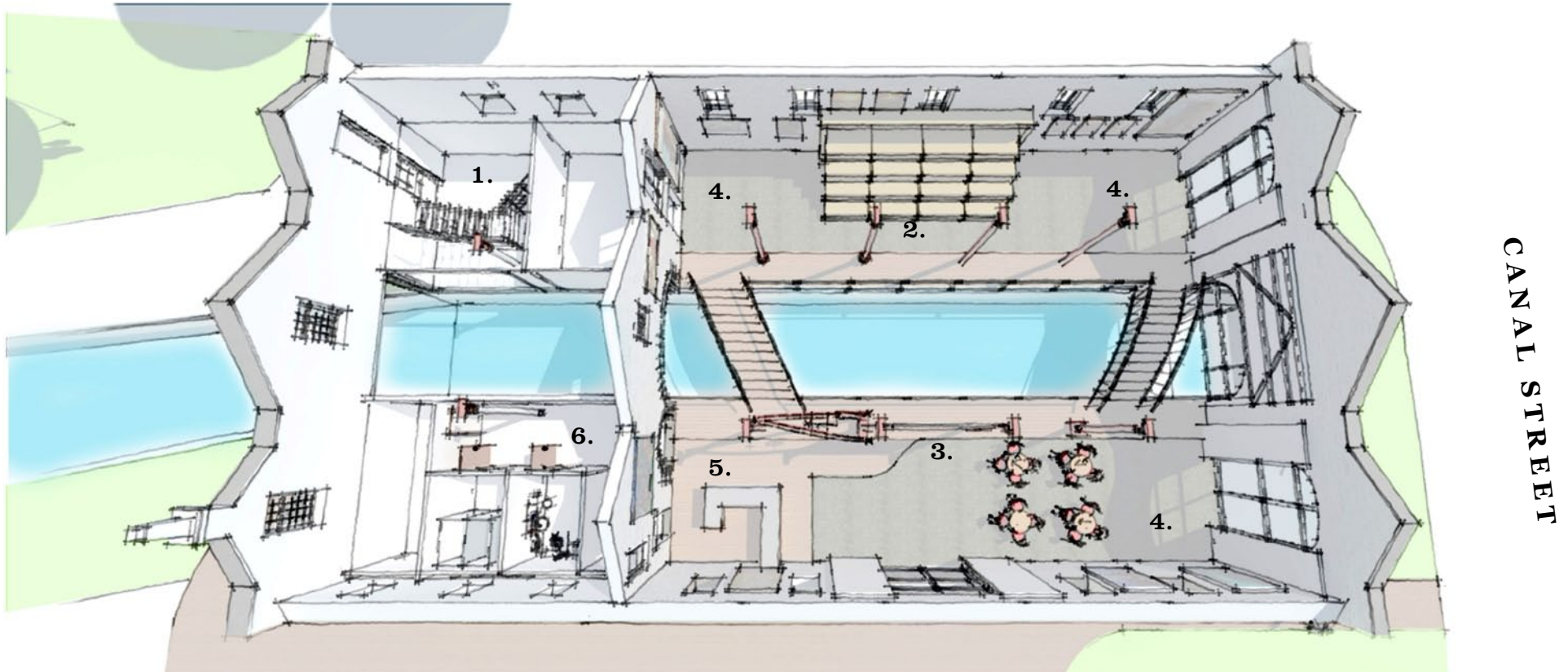
■ Sketch Option 2; Art House

The Whaley Bridge Transhipment Warehouse could be a dramatic, specious and charming venue for an art gallery. A temporary seating installation could provide a platform to view projected niche films or other artistic digital media. This creative display hub could feed into other subsidiary spaces such as a cafe, art studio or a sales office.



Option 2; Sketch perspective A

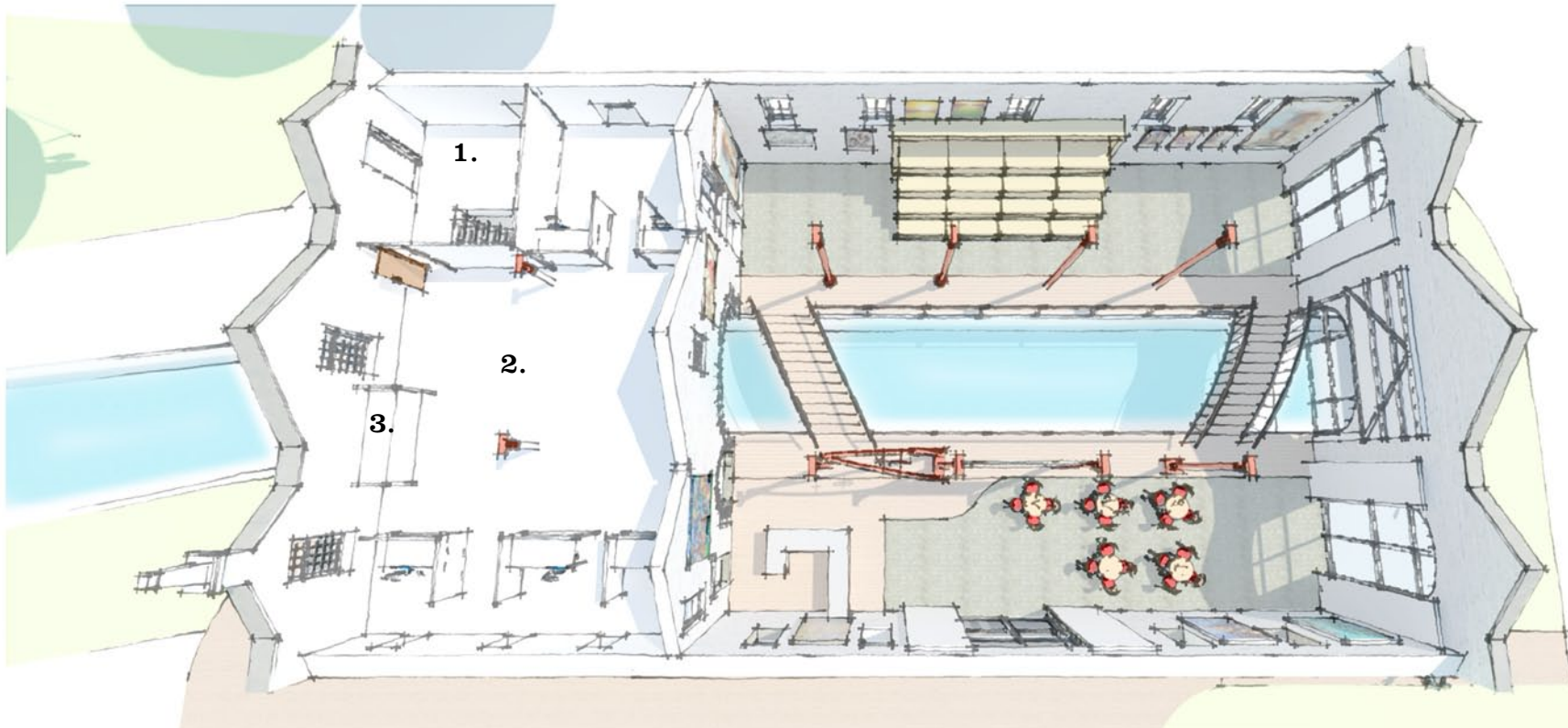
Option 2; Ground Floor Plan



Key

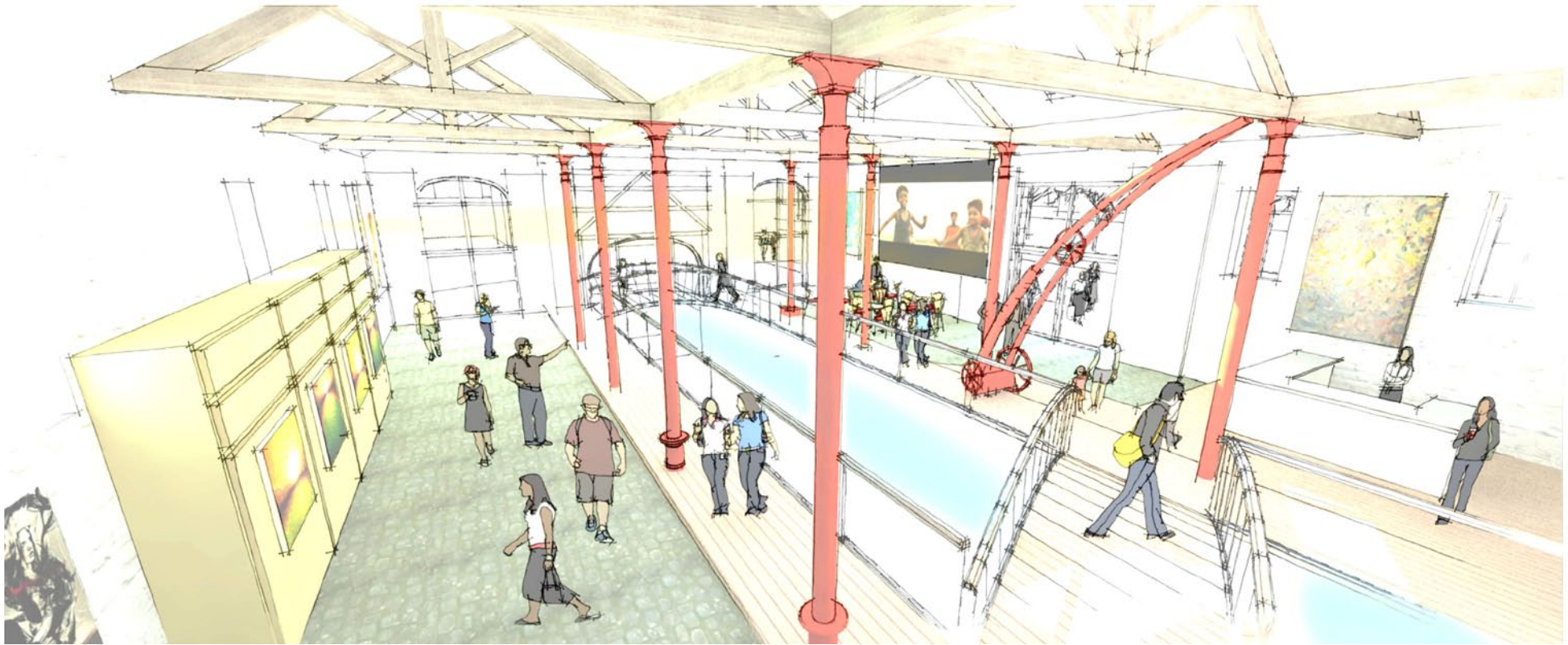
- | | |
|--|-------------------------|
| 1. = Artists reception/stairwell & store | 4. = Gallery space |
| 2. = Retractable seating | 5. = Cafe |
| 3. = Projector screen/ Performance space | 6. = Services & toilets |

Option 2; First Floor Plan

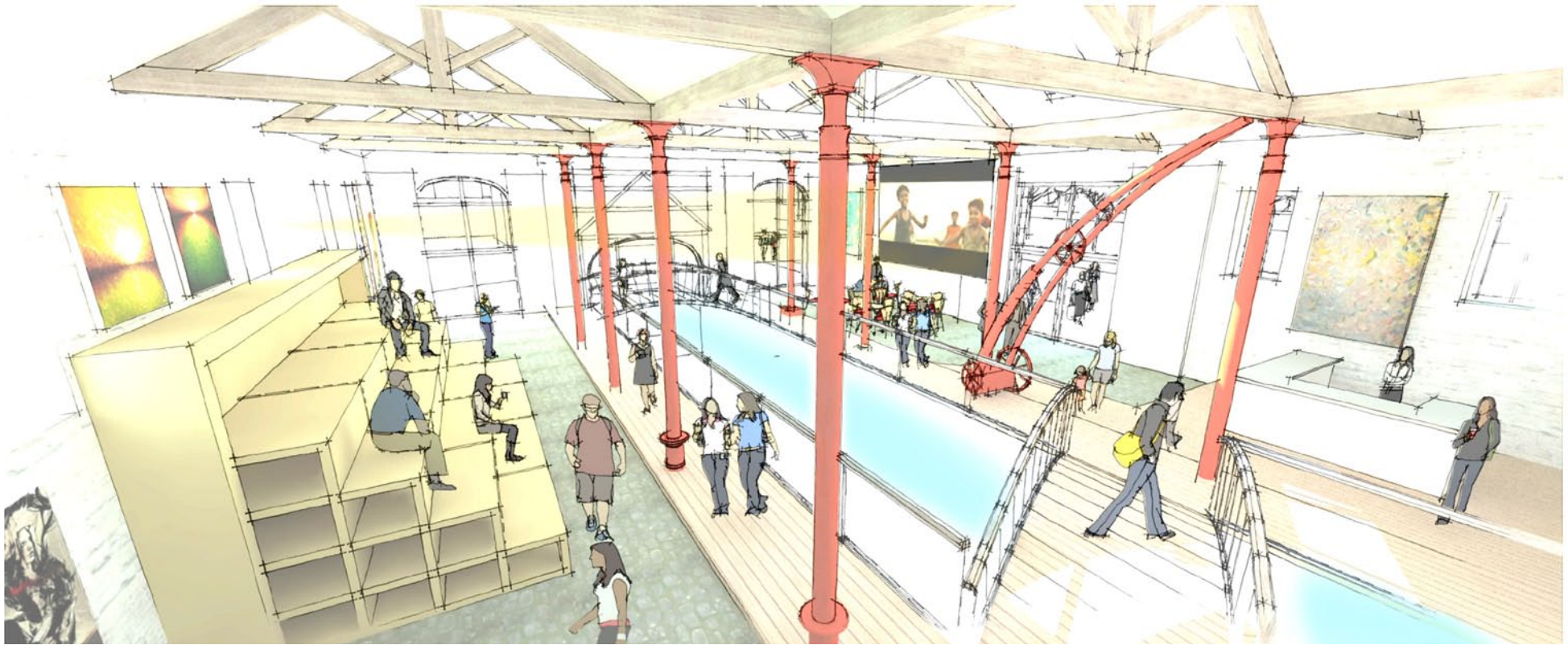


Key

- 1. = Stairwell
- 2. = Artists shared studio space
- 3. = Shared sink



Option 2; Sketch perspective, retractable seating closed



Option 2; Sketch perspective, retractable seating open



Option 2; Sketch perspective C, cafe spill out space

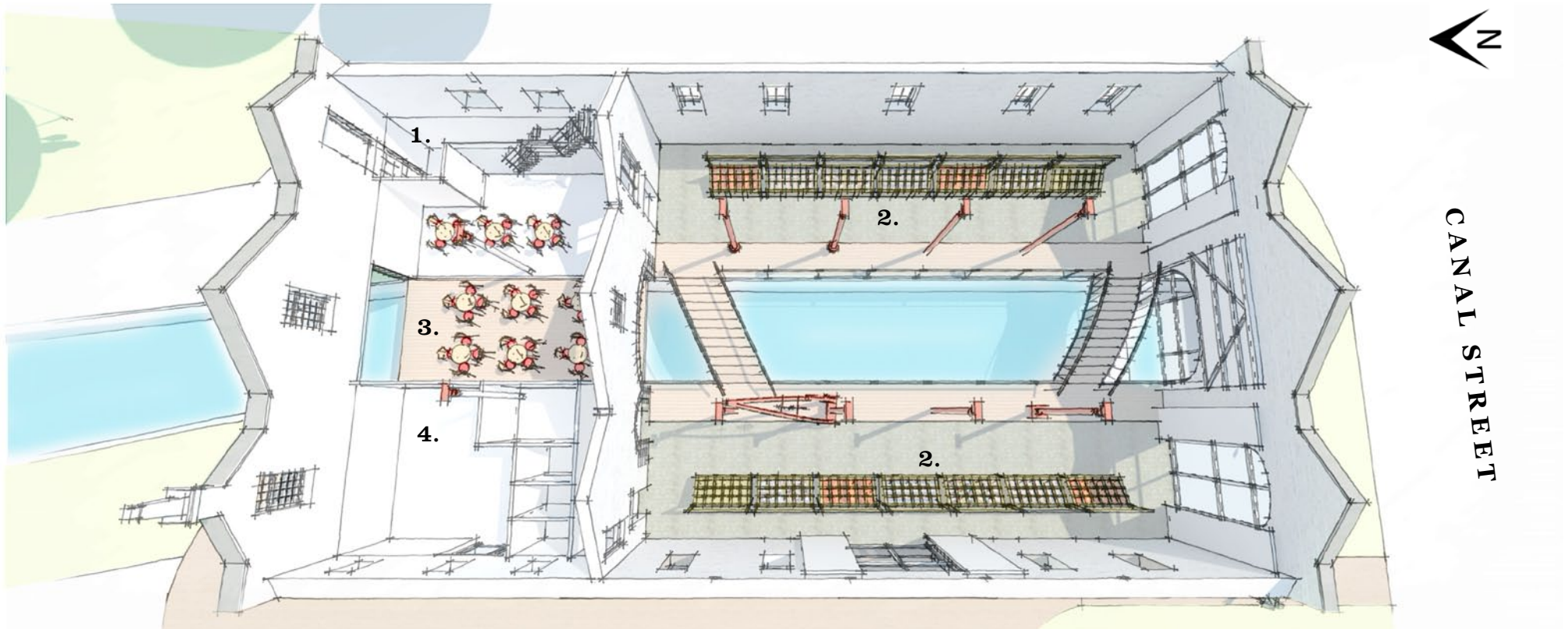
■ Sketch Option 3; Local Market

Option 3 explores the idea of the Transshipment Warehouse becoming a local market for business's and hobbyists alike. The historic interior space would provide a unique sheltered shopping and eating experience for locals and tourists, enhancing the local economy and community spirit.



Option 3; Sketch perspective A

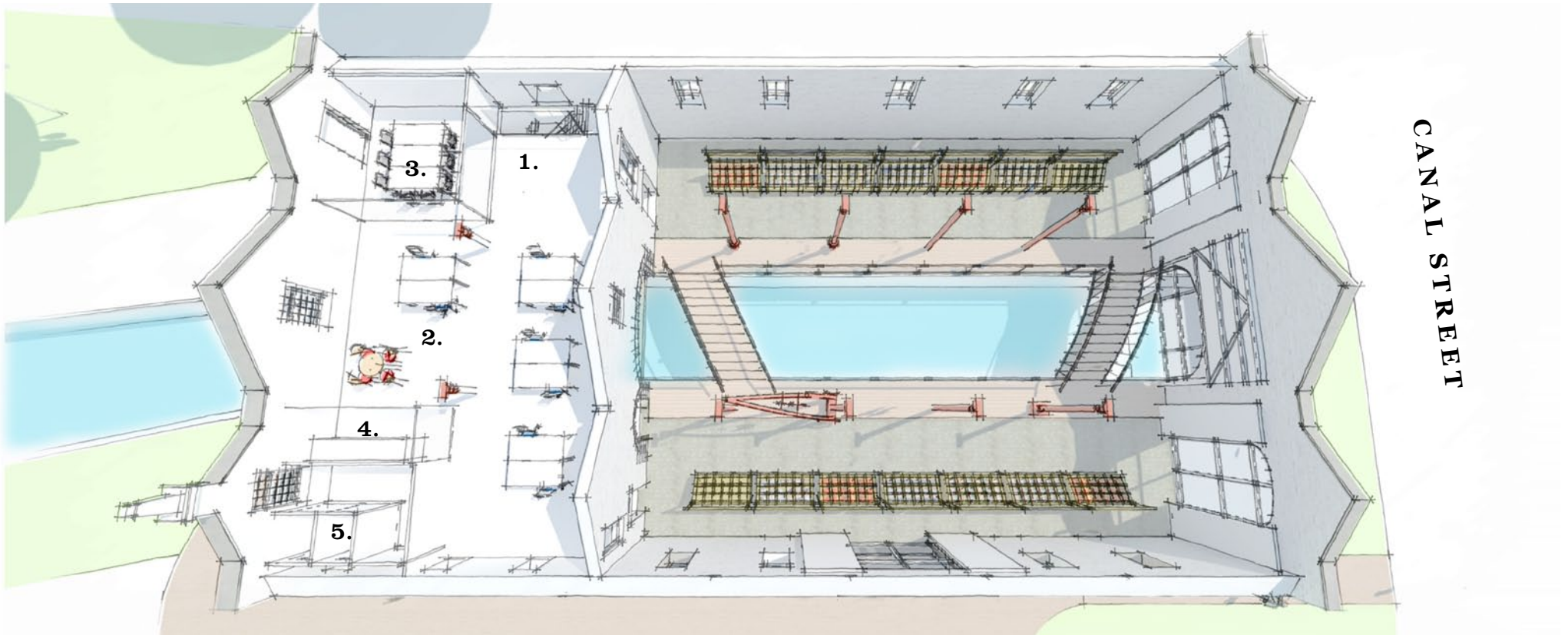
Option 3; Ground Floor Plan



Key

- 1. = Office stairwell
- 2. = Market & food stalls
- 3. = Pontoon seating area
- 4. = Store & services

Option 3; First Floor Plan



Key

1. = Stairwell, reception area

2. = Open plan office

3. = Meeting room

4. = Staff Kitchen

5. = W.C and store



Option 3; Sketch perspective B